



Beaufort County
Public Works
Stormwater Infrastructure
Project Summary

Project Summary: Woodbridge Subdivision - Knightsbridge Road, Parkside Drive, Hyde Park Circle and Bridgewater Drive

Activity: Routine/Preventive Maintenance

Narrative Description of Project:

Completion: Nov-13

Repaired (9) catch basin lids and sinkholes. Handseeded for erosion control.

2014-549 / Woodbridge Subdivision	Labor Hours	Labor Cost	Equipment Cost	Material Cost	Contractor Cost	Indirect Labor	Total Cost
AUDIT / Audit Project	0.5	\$10.23	\$0.00	\$0.00	\$0.00	\$6.62	\$16.85
CBREP / Catch basin - repaired	30.0	\$654.00	\$119.35	\$115.61	\$0.00	\$433.50	\$1,322.46
ERCON / Erosion control	18.0	\$392.40	\$21.72	\$62.35	\$0.00	\$260.10	\$736.57
HAUL / Hauling	22.0	\$473.34	\$235.40	\$148.49	\$0.00	\$317.24	\$1,174.47
ONJV / Onsite Job Visit	17.0	\$544.02	\$61.54	\$52.56	\$0.00	\$378.55	\$1,036.67
PRRECON / Project Reconnaissance	3.0	\$99.54	\$10.86	\$17.52	\$0.00	\$73.41	\$201.33
2014-549 / Woodbridge Subdivision Sub Total	90.5	\$2,173.53	\$448.87	\$396.53	\$0.00	\$1,469.42	\$4,488.34
 Grand Total	 90.5	 \$2,173.53	 \$448.87	 \$396.53	 \$0.00	 \$1,469.42	 \$4,488.34

Before



During



After





Project: Woodbridge
Subdivision-
Parkside Drive

Activity: Routine/
Preventive
Maintenance

Project #:
2014-549

Township:
Bluffton

Completed:
November 2013

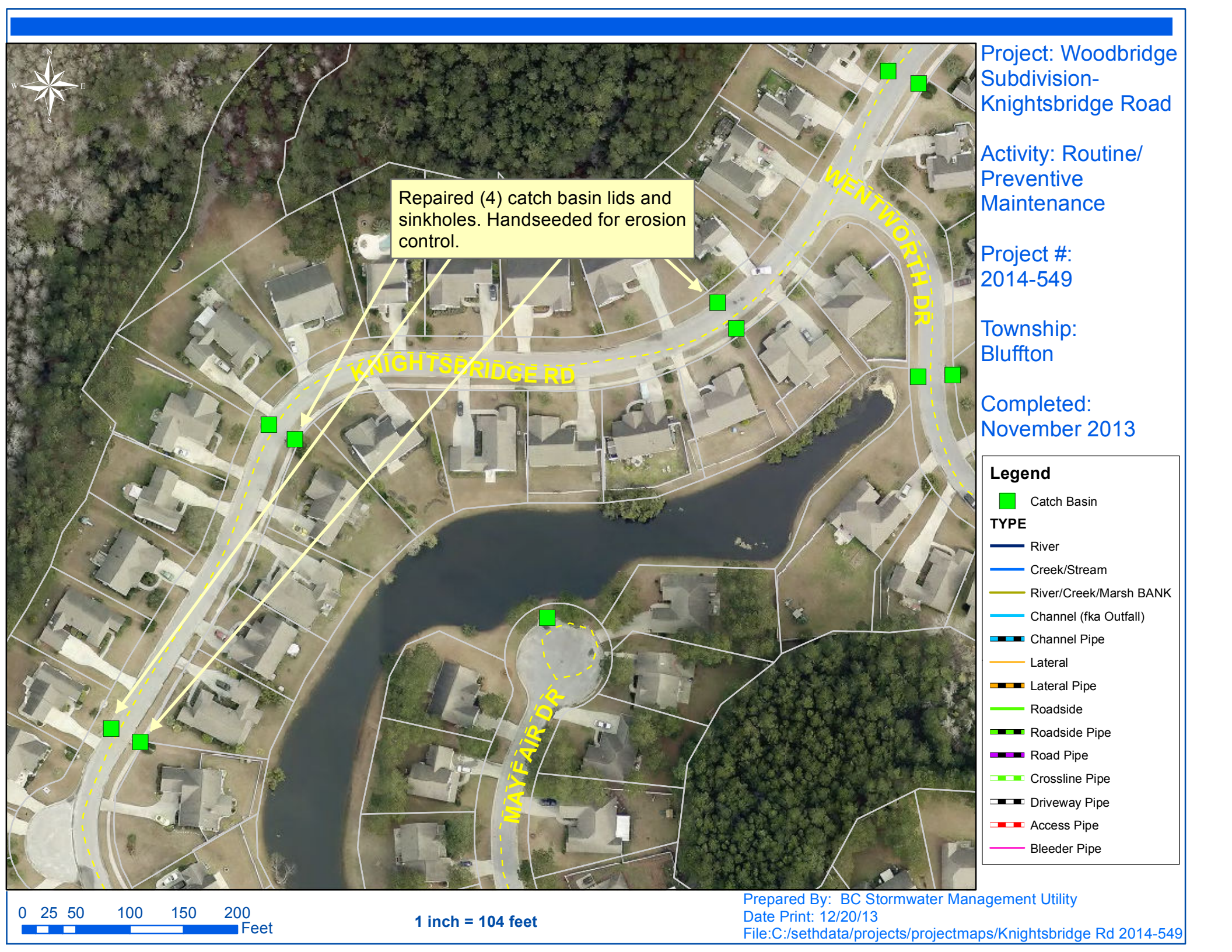
Legend

- Catch Basin
- TYPE**
- River
- Creek/Stream
- River/Creek/Marsh BANK
- Channel (fka Outfall)
- Channel Pipe
- Lateral
- Lateral Pipe
- Roadside
- Roadside Pipe
- Road Pipe
- Crossline Pipe
- Driveway Pipe
- Access Pipe
- Bleeder Pipe

0 15 30 60 90 120
Feet

1 inch = 67 feet

Prepared By: BC Stormwater Management Utility
Date Print: 12/20/13
File: C:/sethdata/projects/projectmaps/Parkside Dr 2014-549



Project: Woodbridge Subdivision-Knightsbridge Road

Activity: Routine/ Preventive Maintenance

Project #: 2014-549

Township: Bluffton

Completed: November 2013

Repaired (4) catch basin lids and sinkholes. Handseeded for erosion control.

Legend

- Catch Basin
- TYPE**
- River
- Creek/Stream
- River/Creek/Marsh BANK
- Channel (fka Outfall)
- Channel Pipe
- Lateral
- Lateral Pipe
- Roadside
- Roadside Pipe
- Road Pipe
- Crossline Pipe
- Driveway Pipe
- Access Pipe
- Bleeder Pipe

0 25 50 100 150 200 Feet

1 inch = 104 feet

Prepared By: BC Stormwater Management Utility
Date Print: 12/20/13
File: C:/sethdata/projects/projectmaps/Knightsbridge Rd 2014-549

